

SiteX EM™ Environment Monitoring Series System Specification

Effective environment monitoring with visibility to critical alarms and events over Ethernet

Opengate Data Systems provides the information necessary to ensure a stable environment for high density IT equipment. To improve availability and reduce operating costs, visibility of critical information over Ethernet is necessary.

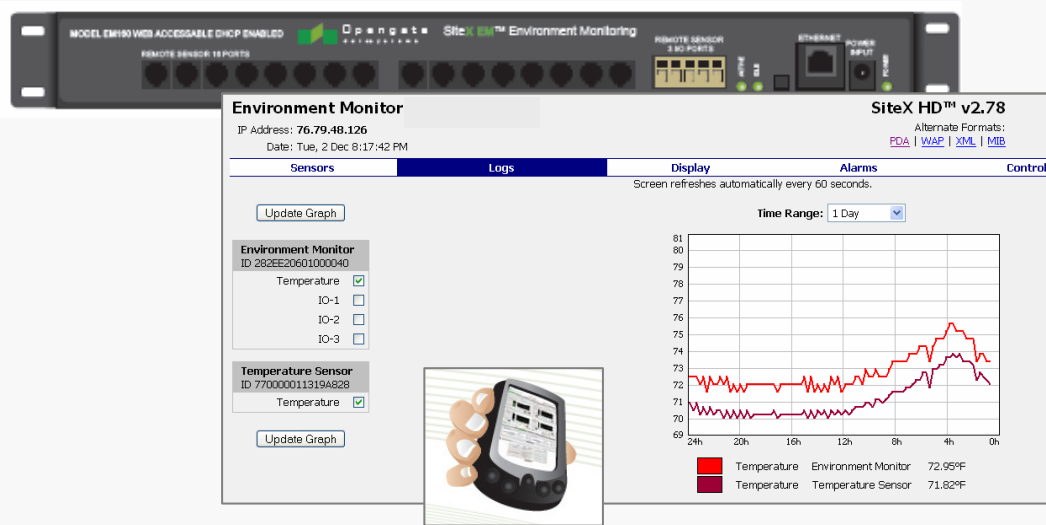
Ensure data center performance with up to 16 temperature and humidity sensors plus three additional I/O ports for water, smoke, and door open position sensors in a 1U rack-mount device.

Monitor using HTTP, HTTPS, XML or SNMP. Assign network properties using the configuration page or use DHCP to automatically connect to your network.

SiteX EM Environment Monitoring Hardware



SiteX EM Web & SNMP Software Logs Interface



SiteX EM Web & SNMP Software Configuration Interface

Network Configuration

DHCP/BOOTP: Enabled

Static IP Address:

Static Net Mask:

Static Gateway:

DNS Server: (optional)

DNS Server, Backup: (optional)

Telnet Service: (dropdown)

SNMP Service: (dropdown)

HTTP Services: (dropdown)

HTTP Server Port:

HTTPS Server Port:

E-Mail Configuration

Status Reports: (dropdown)

SMTP Server:

SMTP Port:

POP3 Server:

POP3 Port:

Authentication: (dropdown)

Username:

Password:

"From" E-Mail Address:

"To" E-Mail Address(es):

One address per line, no commas or semicolons

Interface showing alarm set-points for attached devices

Environment Monitor					ID 282EE20601000040
Sensor	Current	Low Trip	High Trip	Alarm State	
Temperature	72.95°F	<input type="text" value="0"/>	<input type="text" value="0"/>	Disabled <input type="button" value="v"/>	
IO-1	99	<input type="text" value="0"/>	<input type="text" value="0"/>	Disabled <input type="button" value="v"/>	
IO-2	99	<input type="text" value="0"/>	<input type="text" value="0"/>	Disabled <input type="button" value="v"/>	
IO-3	99	<input type="text" value="0"/>	<input type="text" value="0"/>	Disabled <input type="button" value="v"/>	

Temperature Sensor					ID 770000011319A828
Sensor	Current	Low Trip	High Trip	Alarm State	
Temperature	71.38°F	<input type="text" value="-20"/>	<input type="text" value="50"/>	Disabled <input type="button" value="v"/>	

MAXIMIZE SECURITY WITH SITEX EM

Manage the IT environment for your critical equipment while providing visibility to information and alarms

Least complexity and lowest cost of any environment monitoring system

Ensure availability through early alarm notifications for environment through secure Ethernet connection - multiple email or SNMP trap recipients, with escalation

Real-time as well as historical environment monitoring detail allows for capacity planning

Reduce operating costs through effective analysis of your high density environment

SiteX EM Attachable Devices

EM160 shown with EMS40 Water Sensor and EMS40S Water Sensor Cable



EM160 shown with EMS10 Temperature Sensor and EMS15 Temperature/Humidity/Dew Point Sensor

Smoke, Door Contact and Web Camera not shown



SiteX EM Models and Attachable Devices

EM160	Environment Monitoring 16 sensor ports + 3 I/O ports
EM160D	Environment Monitoring 5 sensor ports + 3 I/O ports
EMS10	Temperature Sensor, 12 Foot Cord [std or specify length]
EMS15	Temperature / Humidity / Dew point Sensor, 12 Foot Cord [standard or specify length]
EMS20	Temperature / Airflow Sensor, 12 Foot Cord [standard or specify length]
EMS30	Temperature / Airflow / Humidity Sensor, 12 Foot Cord [standard or specify length]
EMS40	Water Sensor, connect to I/O port
EMS40S	Water Sensor Cable, EM160 I/O port, 4 wires [specify water cable length]
EMS50	Smoke Sensor Kit, connect to I/O port, requires 120V source
EMS60	Door Open Sensor, connect to I/O port
EMS700	Video Camera, Web Enabled [multiple camera types available]